

To: ALL BIDDERS
From: Kenneth Dudley, Taylor County Engineering Division
Date: December 9, 2011
Re: Keaton Beach Coastal Park - Ramp Parking Project
Addendum No. 1

This memorandum is to serve as a Contract Addendum to the **KEATON BEACH COASTAL PARK** project bid package to be accepted by the Board of County Commissioners on December 13, 2011.

These responses are to be considered as if originally incorporated into the Bid Documents:

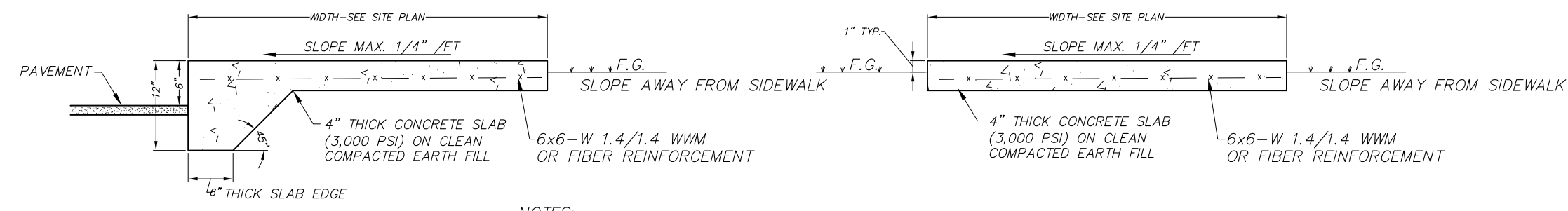
1. **The Plan Set Detail Sheets have been revised and posted on-line at <http://www.taylorcountygov.com/Bids/Index.htm>. The ADA Parking Sign detail and the Turfstone Paver Detail have been updated.**
2. **The Turfstone Paver Bedding Layer will make use of No 8. Stone for both construction options as they are constructed over an open-aggregate base. See specifications for additional information.**
3. **A General and Underground Utility and Excavation Contractor Licenses will be accepted as Valid Business/Contractor License Certification required by Article 3 of the Instructions to Bidders.**
4. **All asphalt concrete paving and related bituminous materials required to be installed as part of this project shall be installed by a company/firm/business currently qualified with the Florida Department of Transportation to perform such work.**
5. **The Performance Bond for this project may be reduced to 75% of the contract amount after completion of the first year of warranty and then further reduced to 50% for the final year.**

I hereby acknowledge receipt of Addendum No. 1:

Name: _____

Company: _____

Date: _____



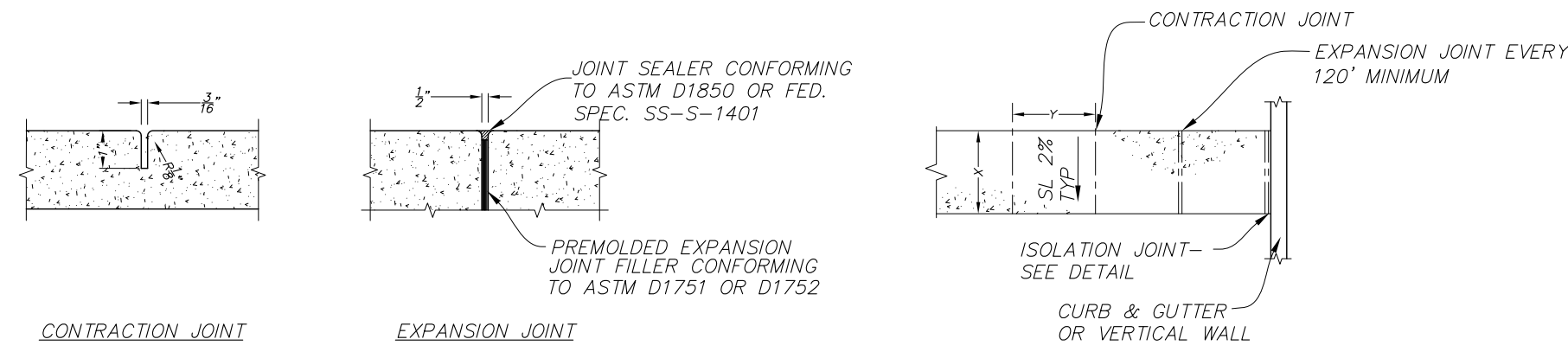
- NOTES:
1. $\frac{3}{8}$ " SAWCUT CONTROL JOINTS $1\frac{1}{2}$ " DEEP, SHALL BE CONSTRUCTED AT 5' O.C.
 2. $\frac{1}{2}$ " EXPANSION JOINTS WITH PREFORMED JOINT FILLER SHALL BE CONSTRUCTED BETWEEN ALL FIXED OBJECTS AND WALK AT CONSTRUCTION JOINTS.
 3. CONSTRUCT SIDEWALKS IN ACCORDANCE WITH SECTION 522, FDOT STANDARD SPECIFICATIONS, LATEST EDITION, INDEX NO. 310 AND THESE SPECIFICATIONS.

ADJACENT TO PAVEMENT

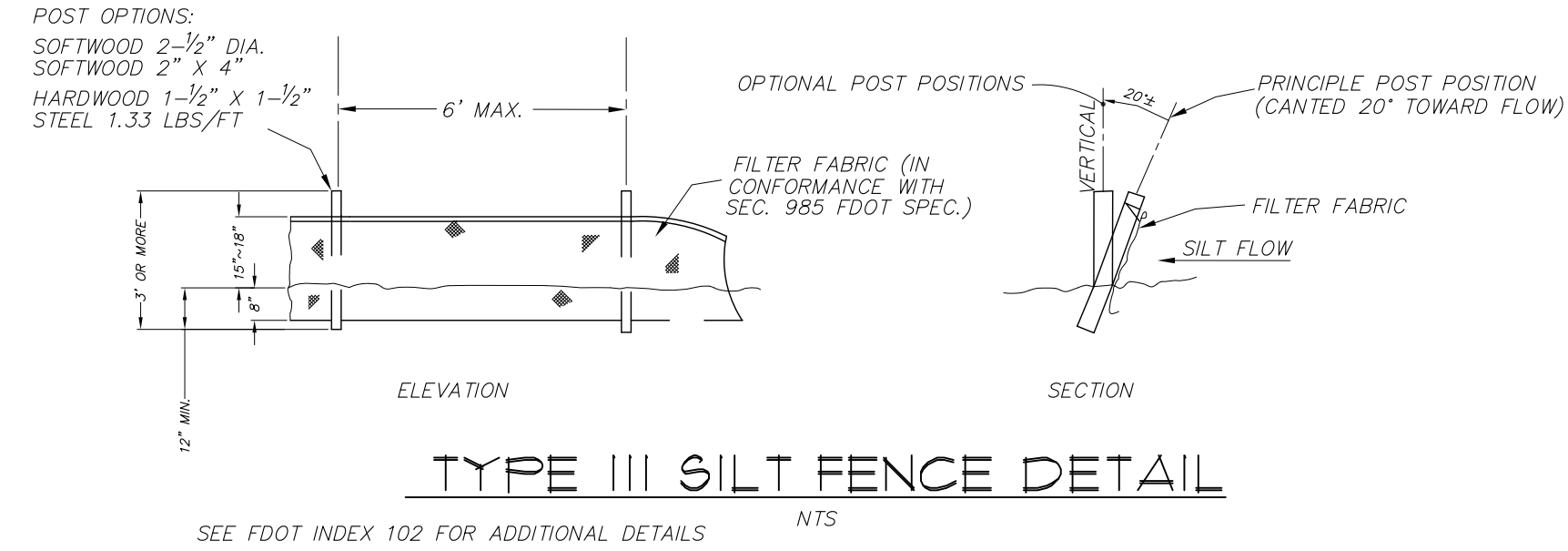
NOT ADJACENT TO PAVEMENT

CONCRETE SIDEWALK DETAILS

WIDTH OF WALK = X	SPACE BETWEEN JOINTS OR VERTICAL WALL
5'	5'
8'	8'
12'	12'



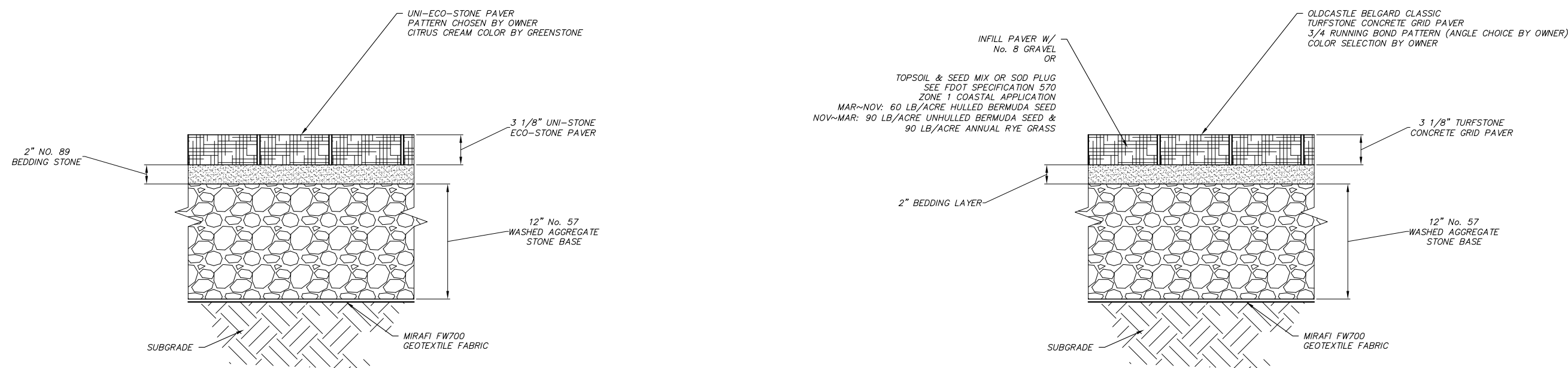
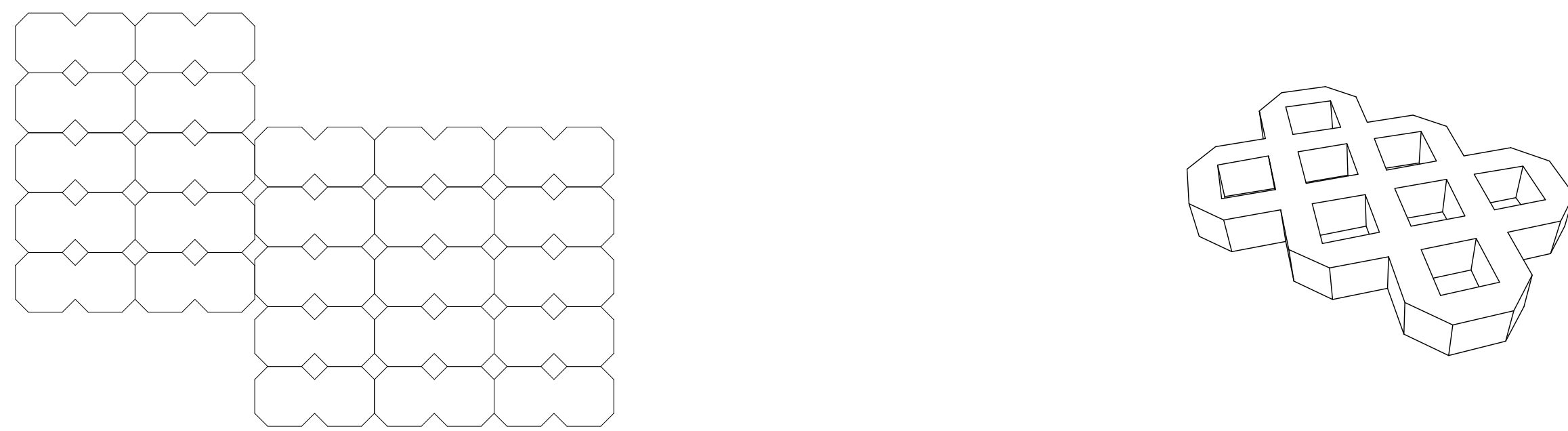
SIDEWALK JOINT DETAIL



SEE FDOT INDEX 102 FOR ADDITIONAL DETAILS



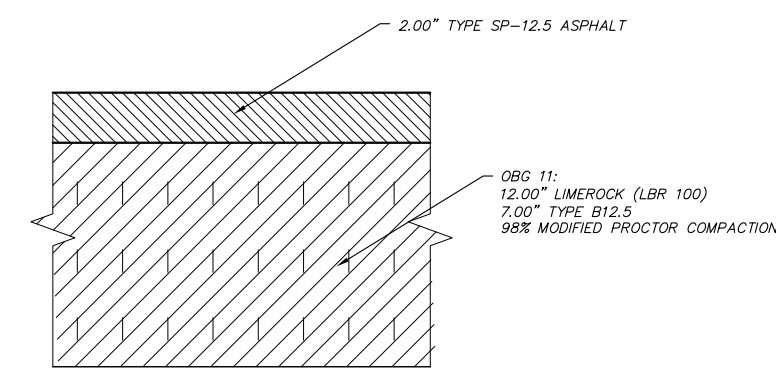
NOTE: AREA WITHIN BARRICADE IS NOT TO BE USED FOR STORAGE OF MATERIAL OR EQUIPMENT.



- NOTE:
- 1) UNI-STONE PAVERS TO BE INSTALLED IN STRICT ACCORDANCE WITH MANUFACTURERS SPECIFICATIONS.
 - 2) COMPACT SUBGRADE SUFFICIENTLY TO PREVENT RUTTING DURING PLACEMENT OF GRAVEL BASE, 92-94% STANDARD PROCTOR.
 - 3) ALL ADJACENT PIECES OF GEOTEXTILE FABRIC SHALL BE OVERLAPPED 18" MINIMUM AND SHALL COVER THE FULL BOTTOM AND SIDES OF BASE.

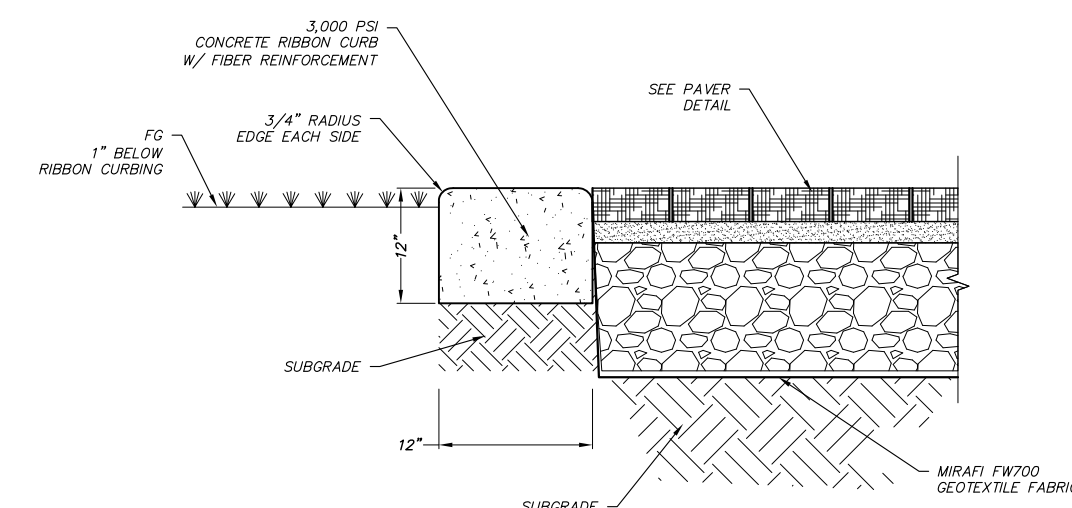
UNI-STONE PAVER DETAIL

TURFSTONE PAVER DETAIL



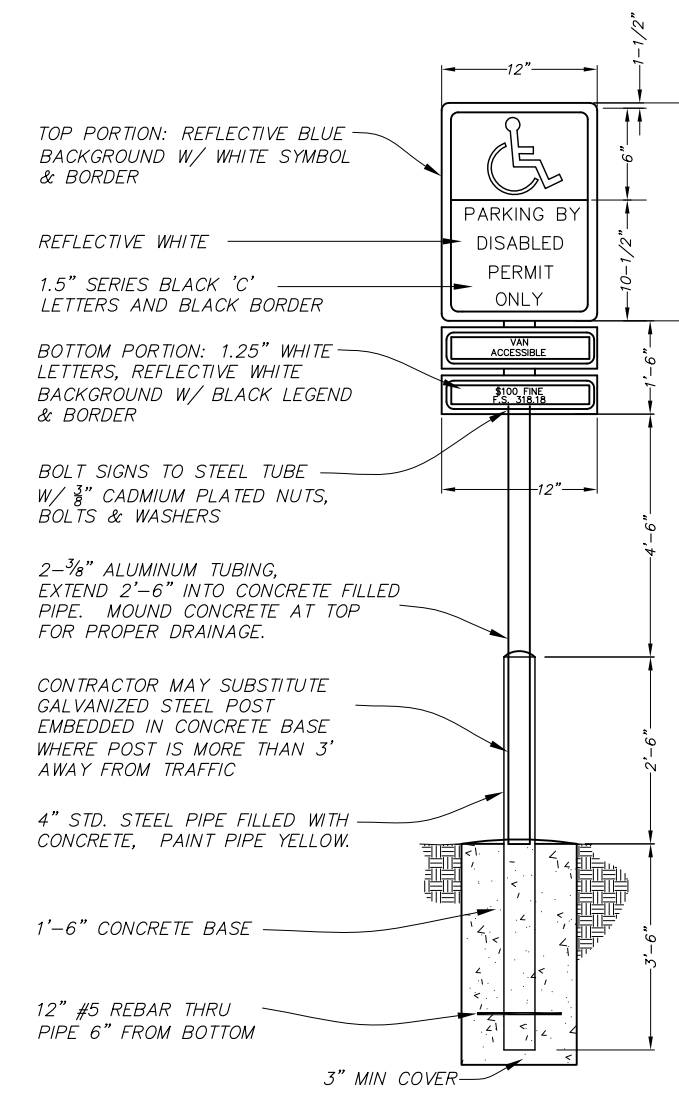
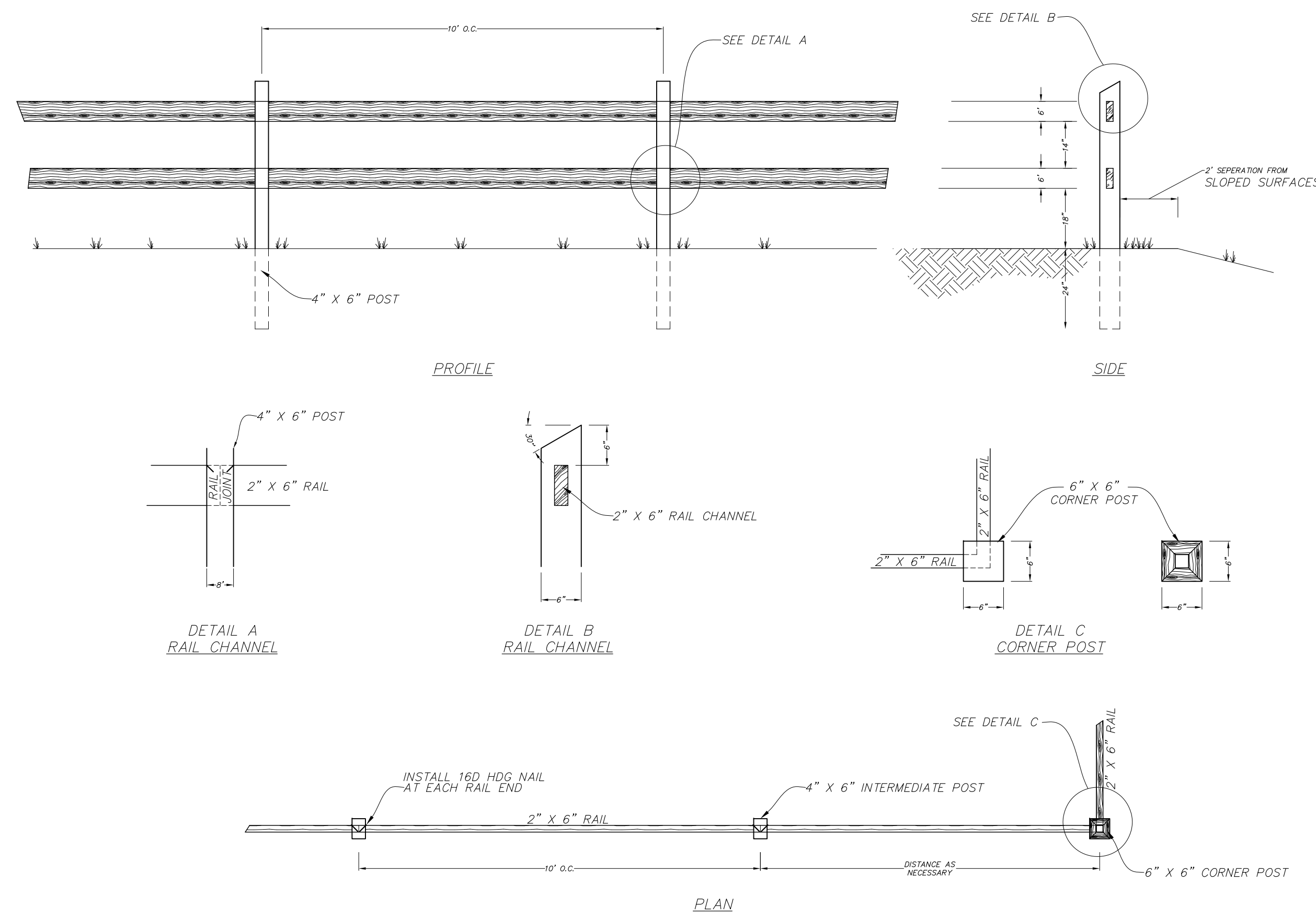
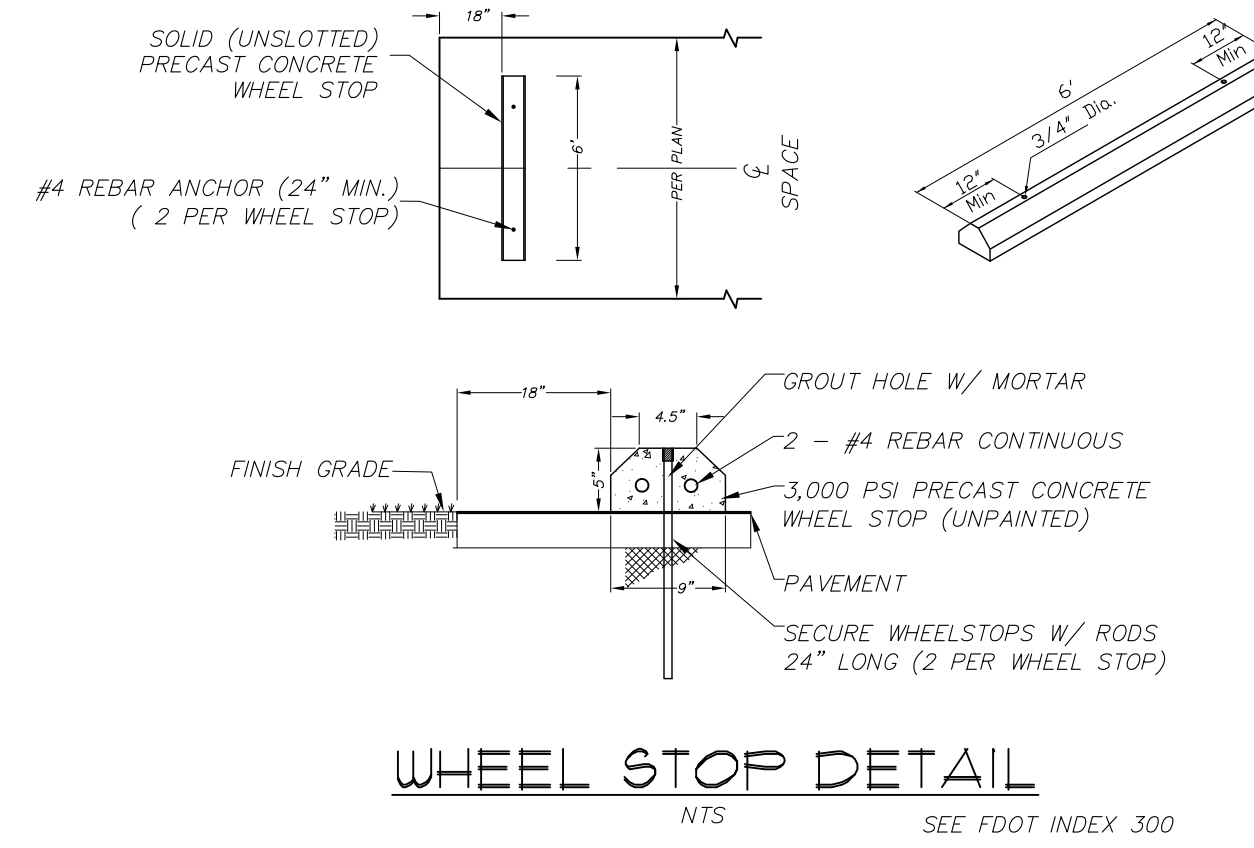
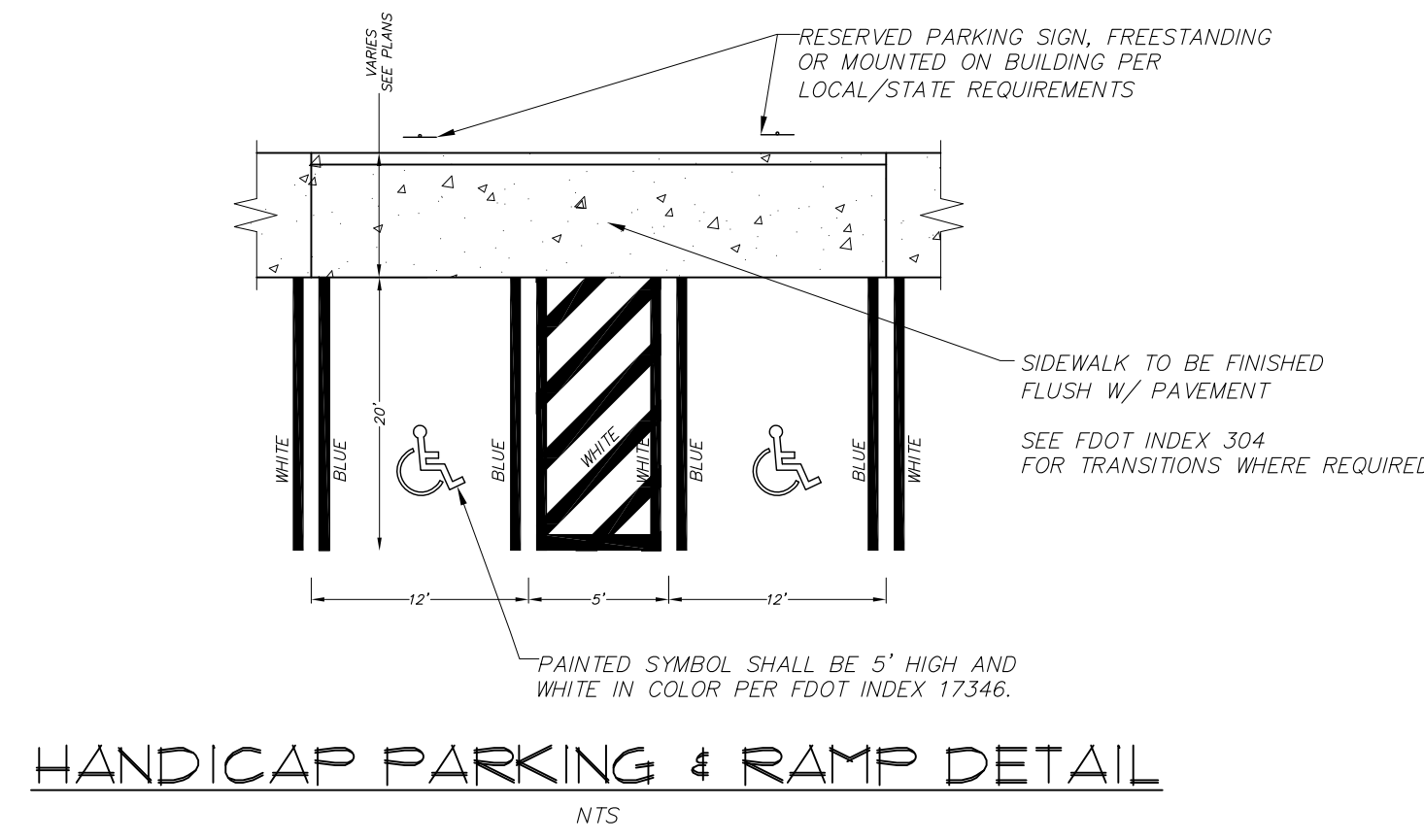
- NOTE:
- 1) PAVED AREAS TO BE CONSTRUCTED IN ACCORDANCE WITH THESE PLANS AND CURRENT FDOT REQUIREMENTS
 - 2) MINIMUM OF TWO DENSITY TESTS FOR EACH COMPONENT (LAYER) AT EACH AREA
 - 3) GEOTECHNICAL TESTING TO BE PERFORMED BY AN INDEPENDENT CERTIFIED TESTING LABORATORY. TEST RESULTS TO BE COPIED TO OWNER. PASSING RESULTS REQUIRED BEFORE MOVING TO NEXT PHASE OF PROJECT.
 - 4) IN ACCORDANCE WITH FDOT STANDARDS, CONTRACTOR MAY SUBSTITUTE 12" LBR 40 STABILIZED SUBGRADE FOR 6" OF THE OBG 11 THICKNESS WHEN USING LIMEROCK BASE COURSE UPON DEMONSTRATION OF ACHIEVING REQUIRED COMPACTION.

PAVING DETAIL



- NOTE:
- 1) $\frac{3}{8}$ " SAWCUT CONTROL JOINTS $1\frac{1}{2}$ " DEEP, SHALL BE CONSTRUCTED AT 10' O.C.
 - 2) $\frac{1}{2}$ " EXPANSION JOINTS WITH PREFORMED JOINT FILLER SHALL BE CONSTRUCTED BETWEEN ALL FIXED OBJECTS AND WALK AT CONSTRUCTION JOINTS.
 - 3) SEE SIDEWALK DETAILS FOR ADDITIONAL INFORMATION.

RIBBON CURB DETAIL



- SIGN NOTES:
- SIGN CONSTRUCTION, DESIGN AND PLACEMENT SHALL COMPLY WITH STATE AND LOCAL STATUTES.
 - ONE SPACE TO BE DESIGNATED VAN ACCESSIBLE.