

Deepwater Horizon Oil Spill:
Response Plans and Information
June 8, 2010

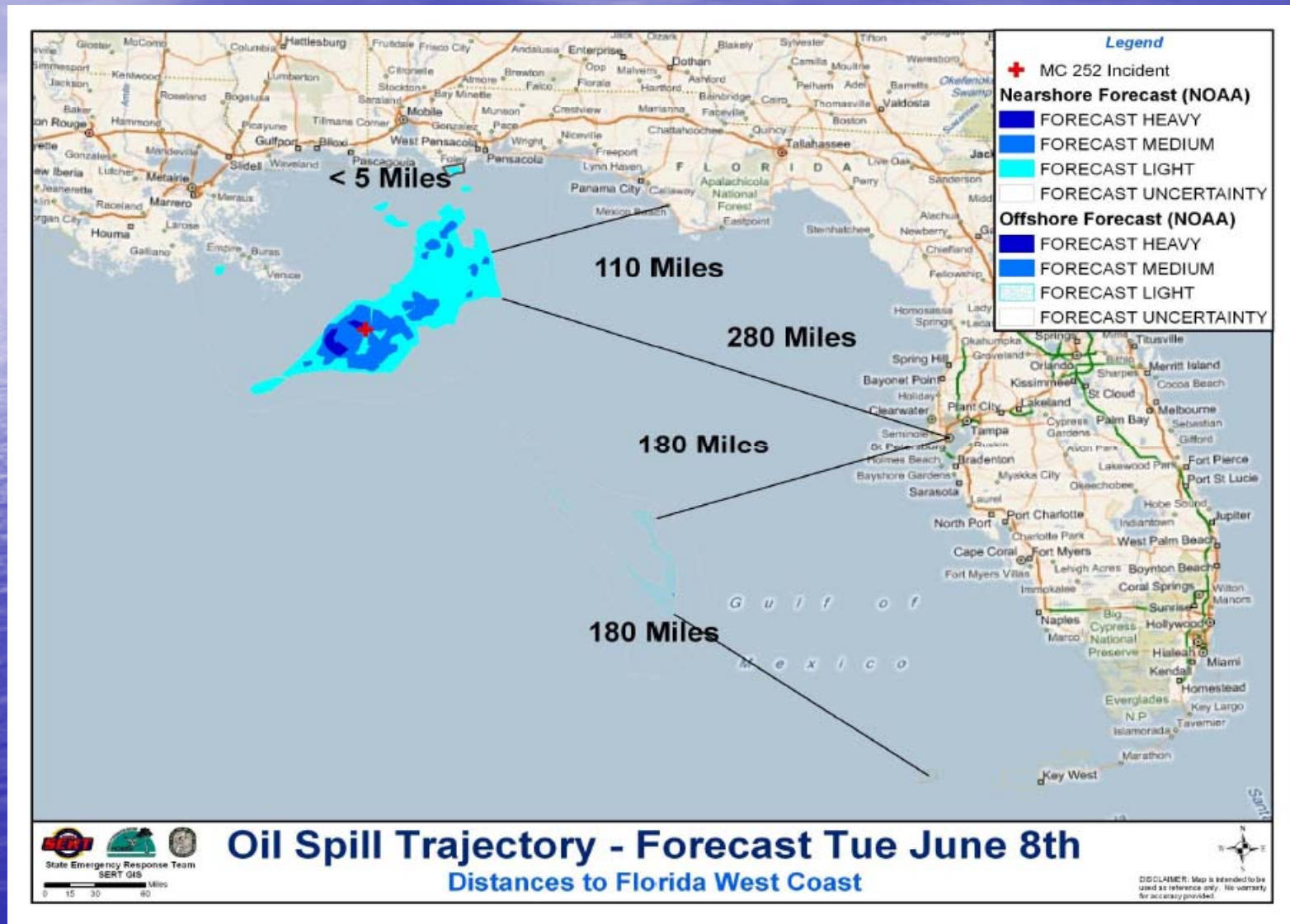
Presented By
Taylor County EM
Taylor County Extension

Current Situation

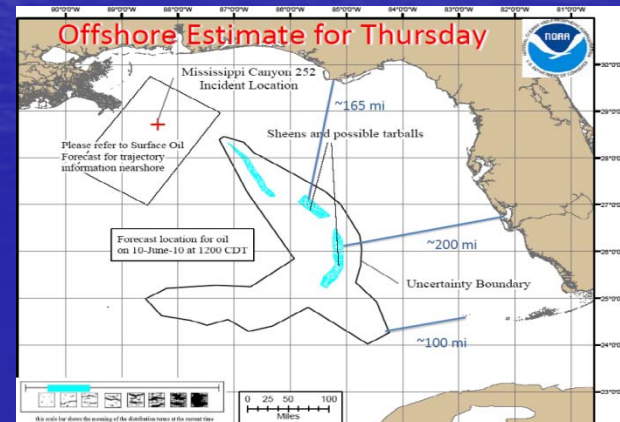
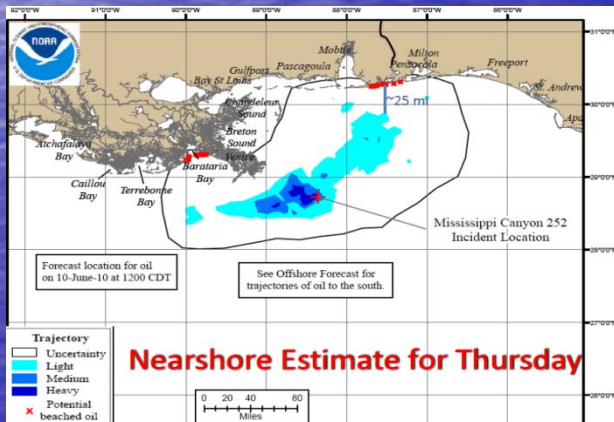
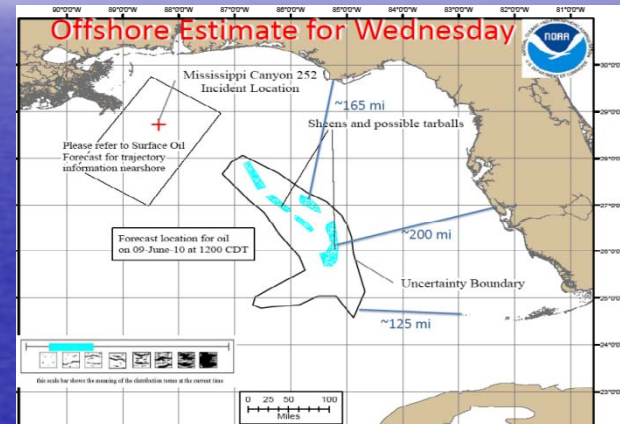
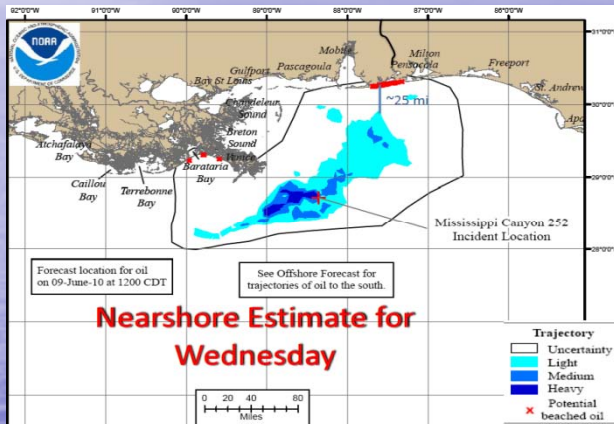


**Satellite Image from
Monday Afternoon**

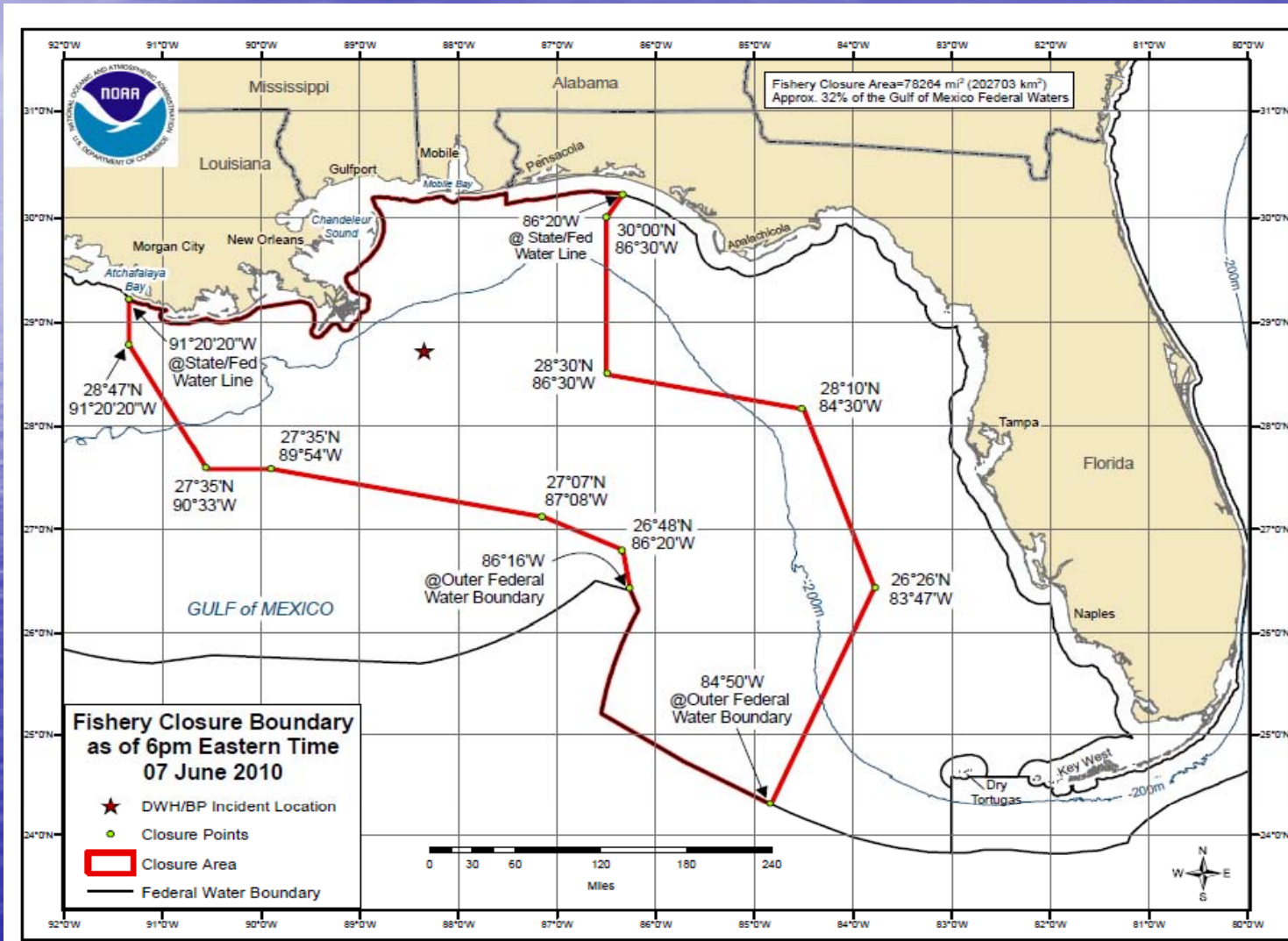
Current Situation



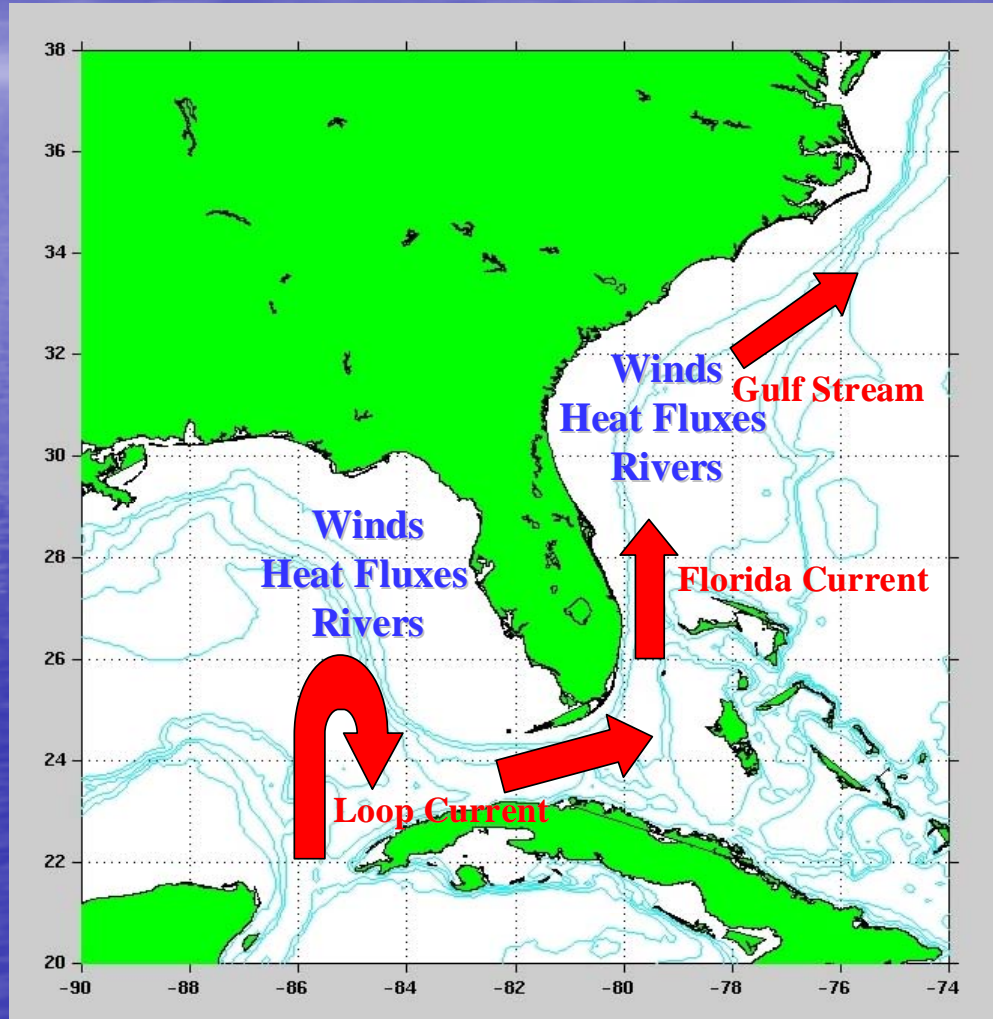
Forecasts



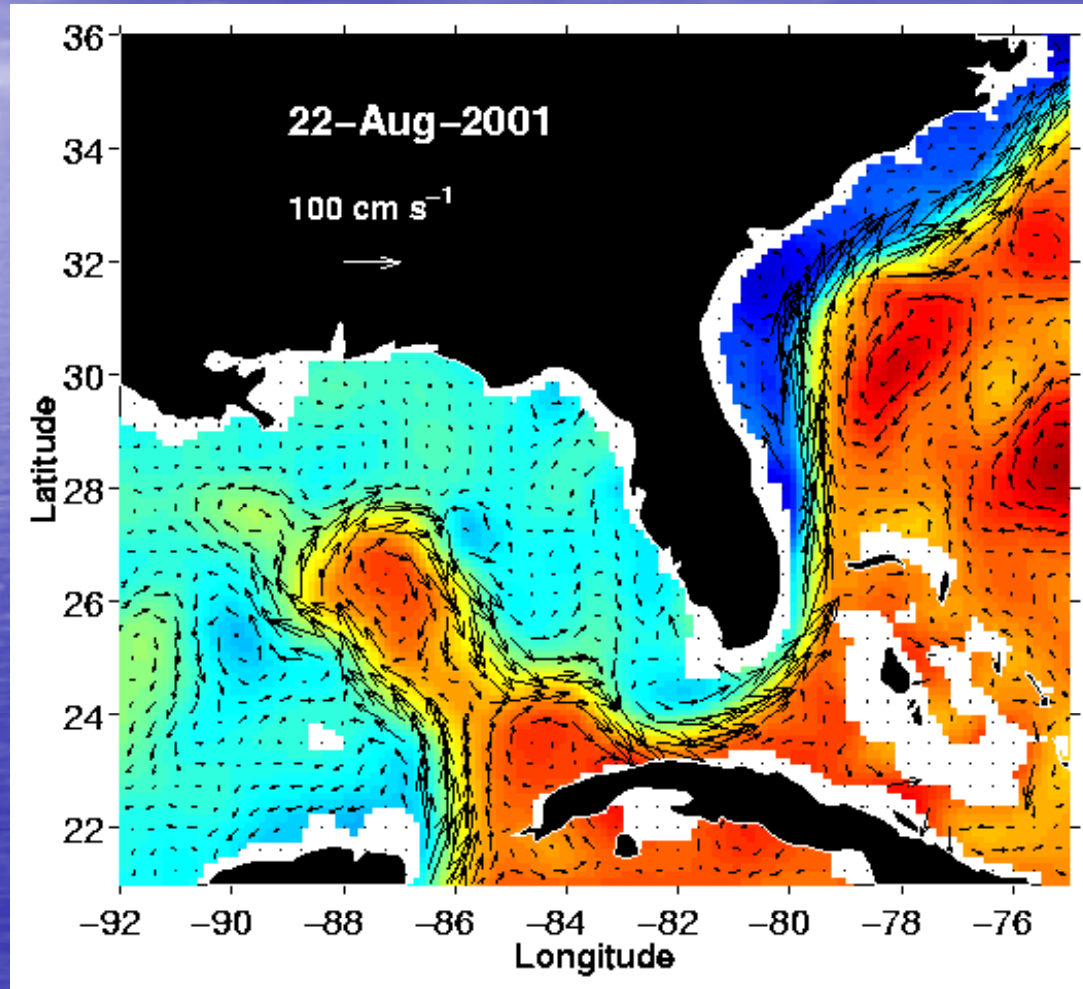
Current Fisheries Closures



Source:
USF-Weisberg



Sea surface currents (arrows)
superimposed on sea surface height
(with **red** indicating high and **blue** low).



Landfall Reports and Predictions (SOURCE-FDEP 7 Jun 2010):

- Potential impacts to Florida's shoreline will likely be highly weathered, in the form of tar balls, oil sheen, tar mats or mousse – a pudding-like oil/water mixture that could be brown, rust or orange in color.



Ft. Walton Beach



Perdido Key

Boom designs



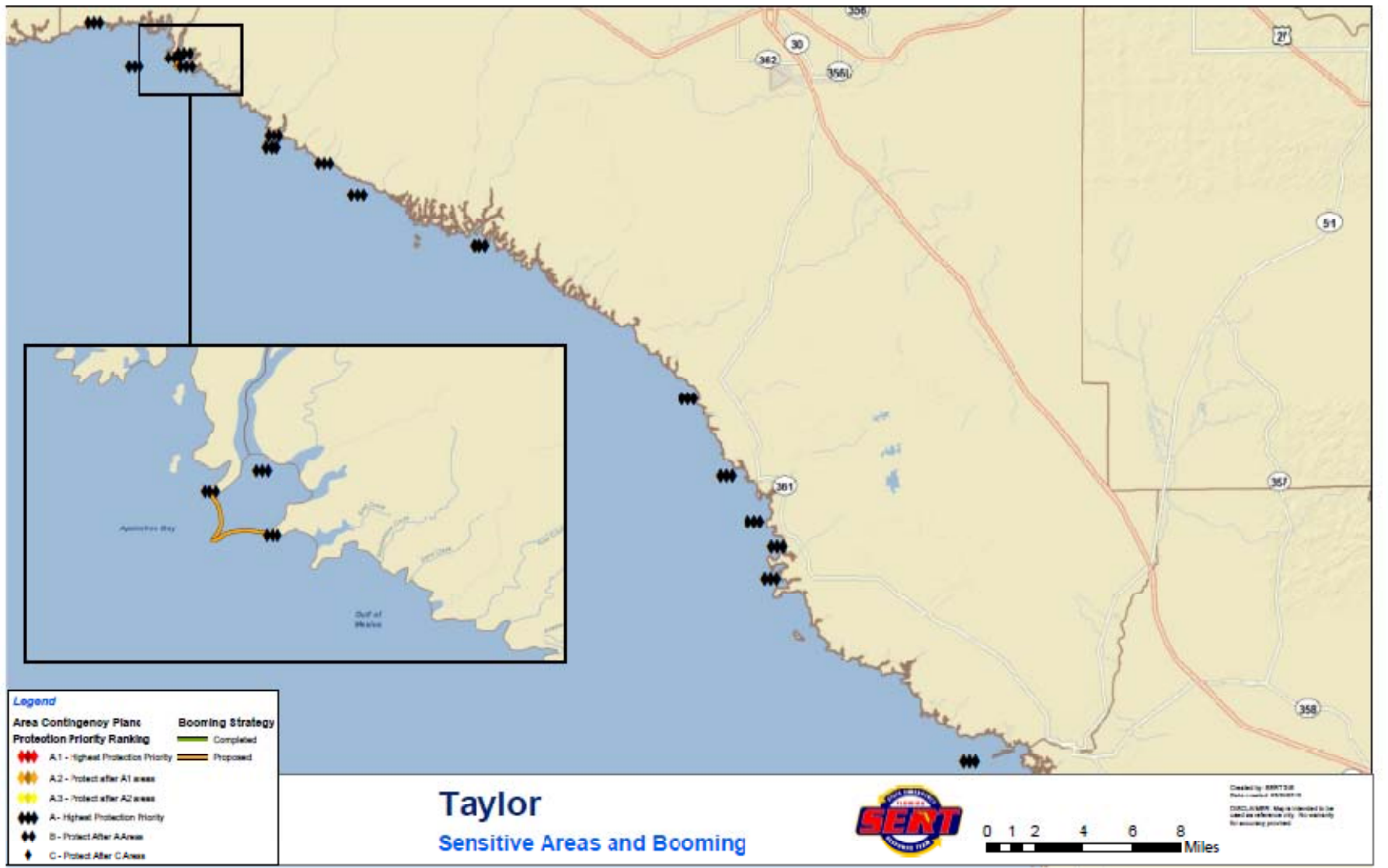


Taylor County's Protection Plan

Area Contingency Plan (ACP)

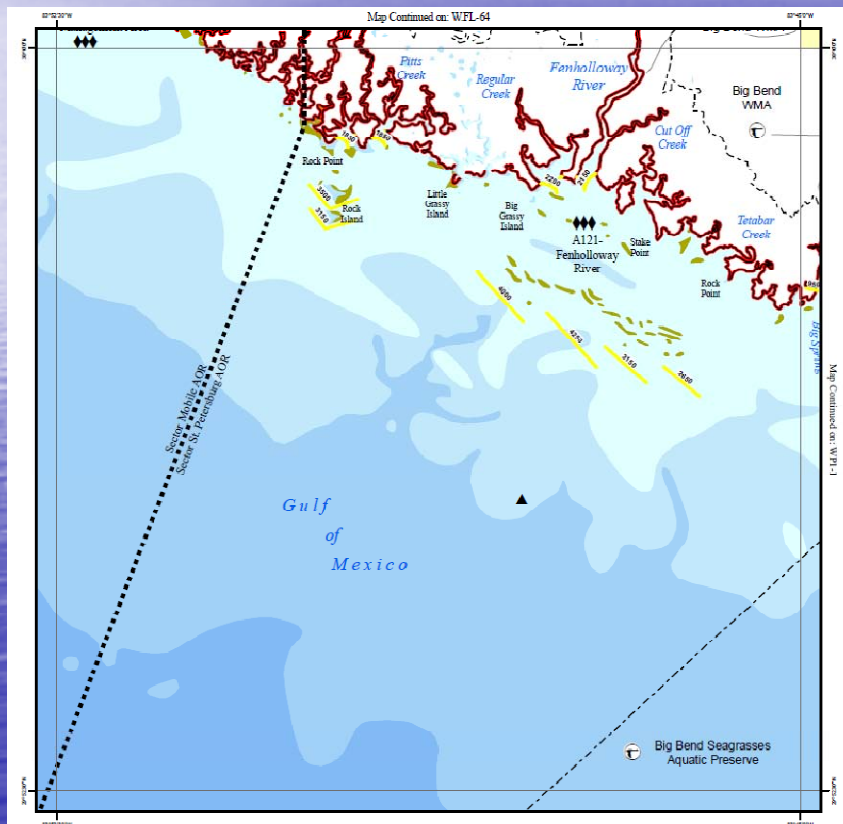
- Developed by USCG for oil spill response
 - Revised May 12
 - Identifies protection strategies for environmentally sensitive areas
- Areas identified are guaranteed to be protected by USCG
 - Booming
 - Off/Near shore skimming

Area Contingency Plan (ACP)

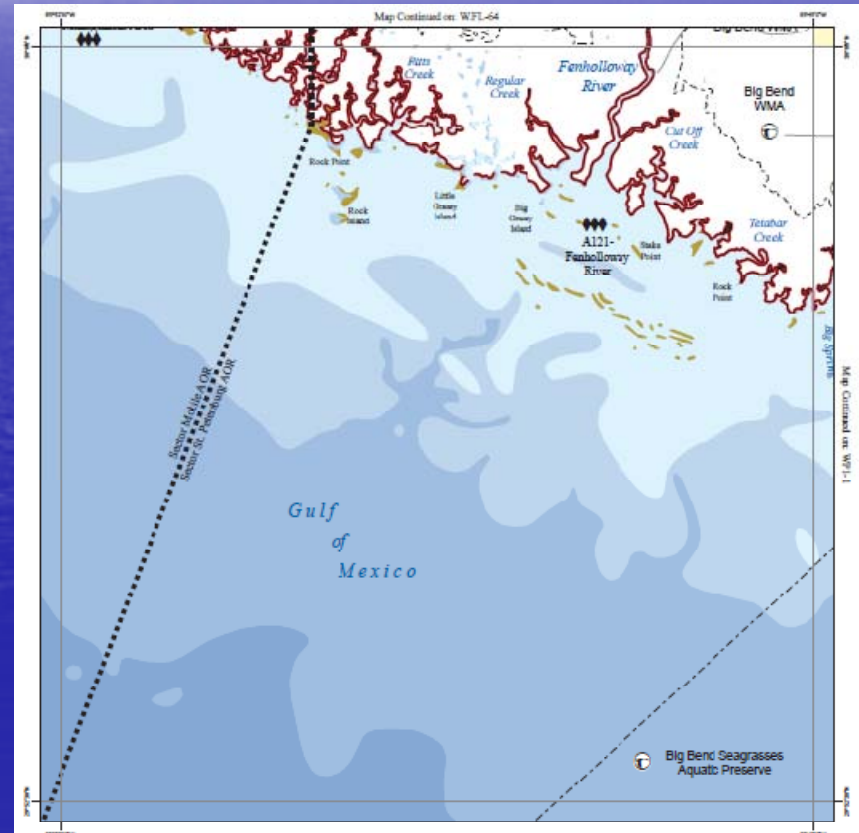


Area Contingency Plan (ACP)

Revised

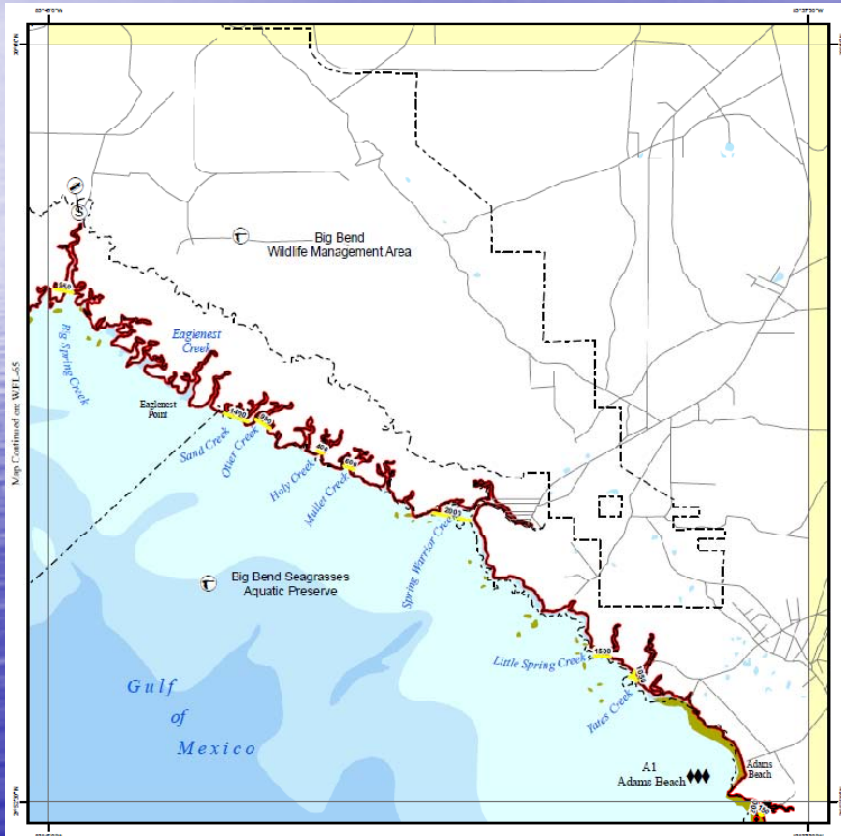


Original

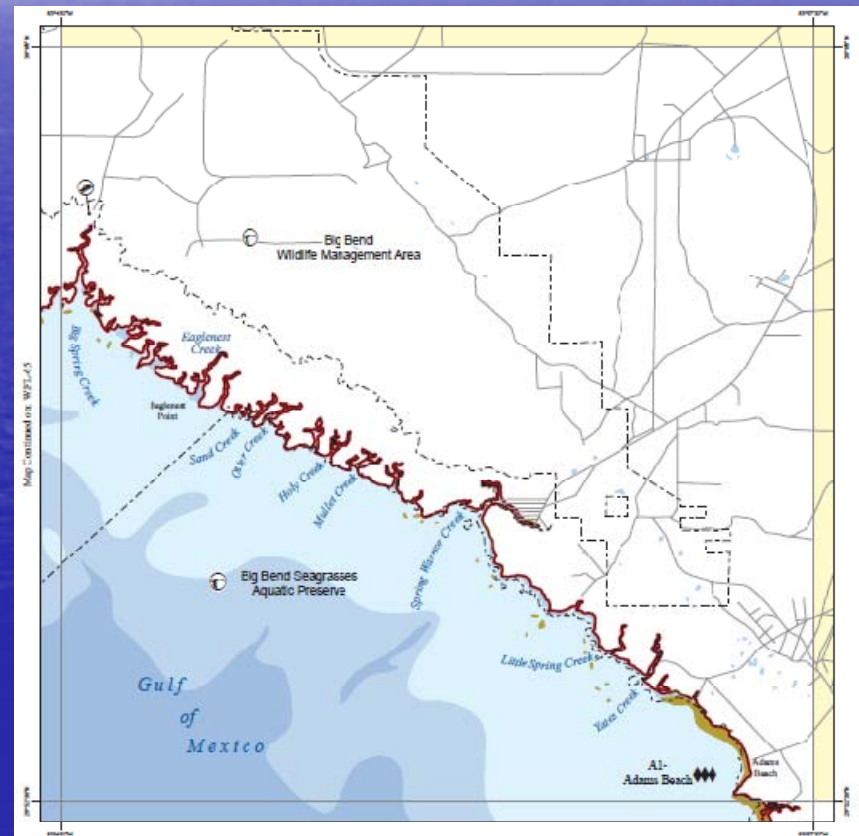


Area Contingency Plan (ACP)

Revised

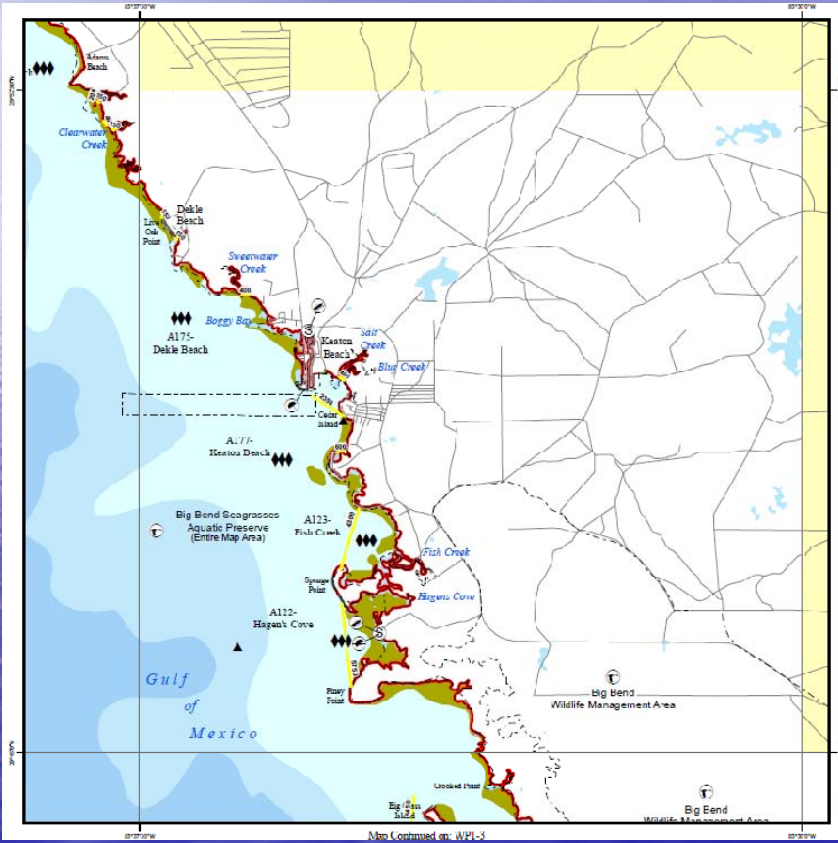


Original

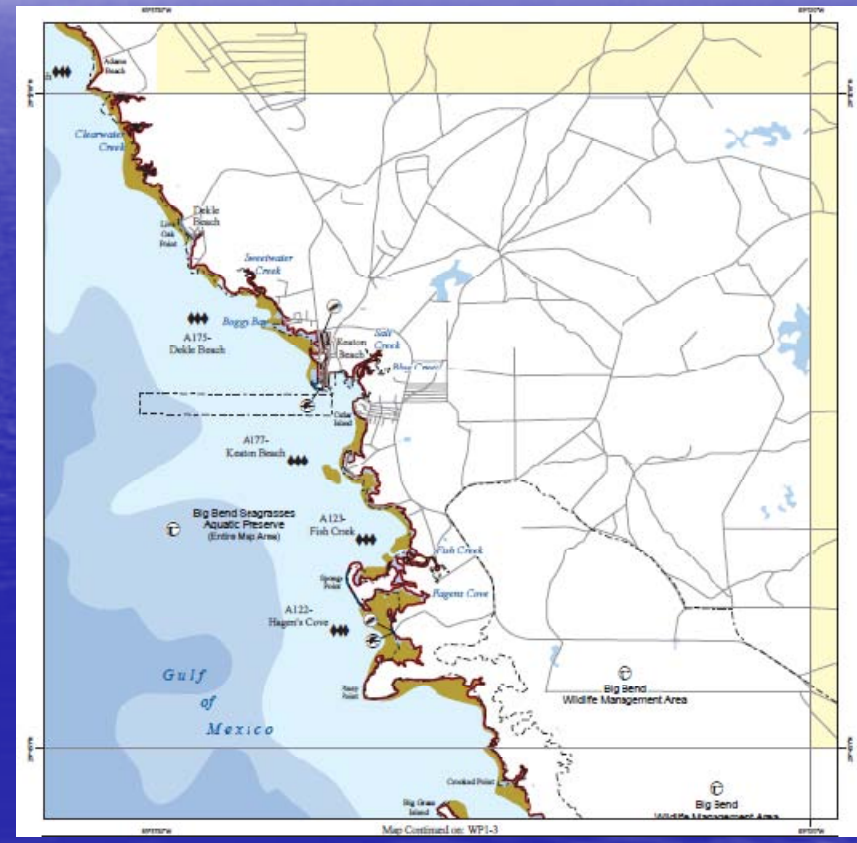


Area Contingency Plan (ACP)

Revised



Original

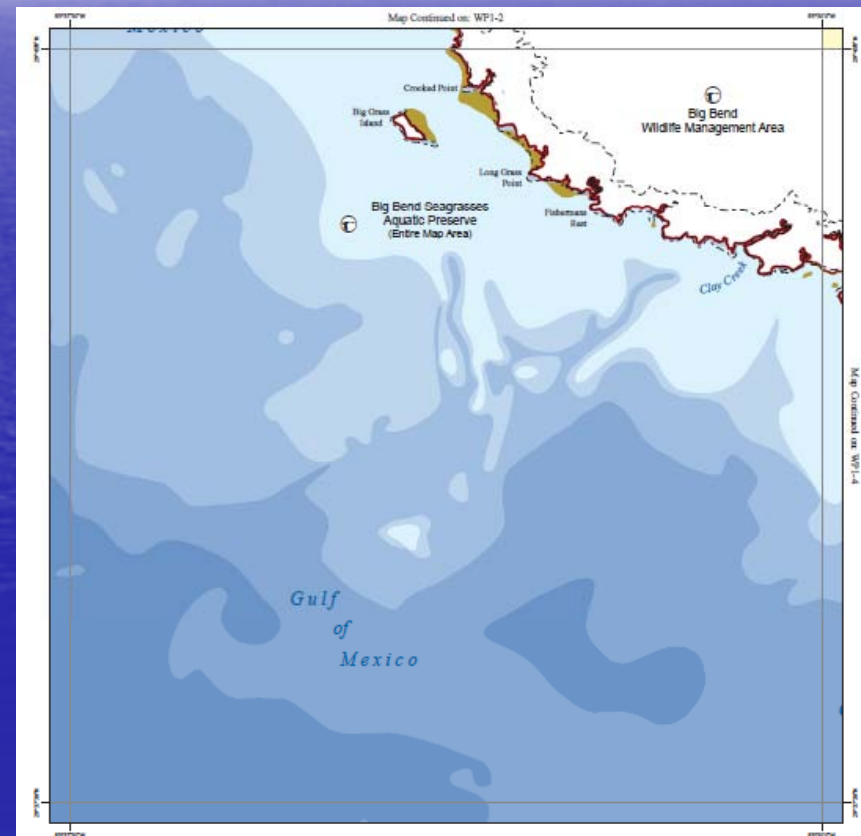


Area Contingency Plan (ACP)

Revised

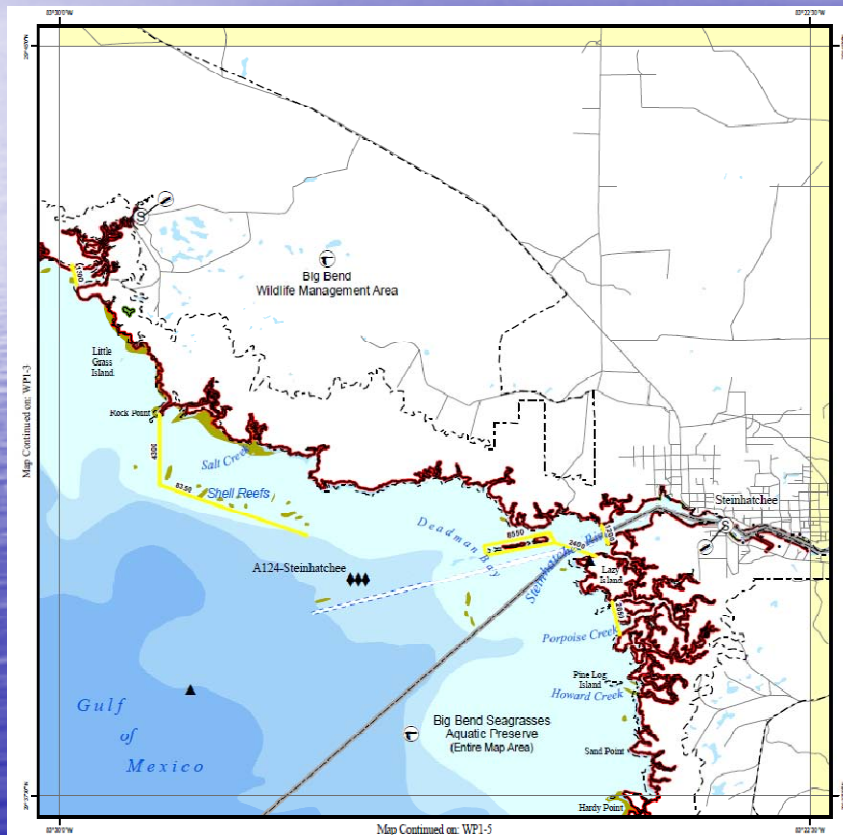


Original

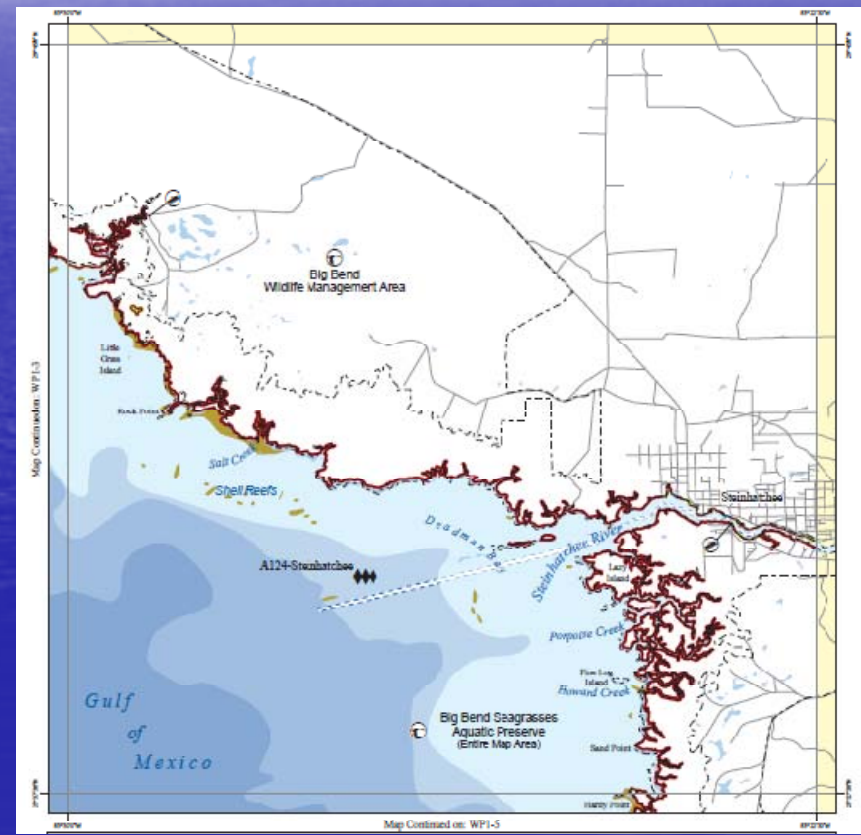


Area Contingency Plan (ACP)

Revised



Original



The Response

- If oil reaches the trigger point (93 miles offshore)
 - USCG UC mobilizes resources
 - Resources staged 3-5 days before impact
 - Resources deployed just prior to impact
 - Off/Near shore skimming
 - Booms
- If oil reaches our coast
 - DO NOT TOUCH IT!!
 - Report any cases of oil on the shore to the EOC (838-3575)
 - Recon team dispatched
 - SCAT team mobilized to lead clean up

What You Can Do

- Current Situation
 - Register to volunteer at www.volunteerflorida.org
 - Provide input to enhance ACP
 - Stay informed
- Pre-Impact
 - Coast Watchers Program
 - Shoreline cleanup
 - Respond to volunteer opportunities/training
- Post-Impact
 - Report oil on the shore or wildlife to the EOC (838-3575)
 - DO NOT TOUCH THE OIL OR WILDLIFE
 - Participate in response and volunteer programs
 - Only trained, paid responders will come into contact with oil, wildlife, and contaminated materials

Effects of Hurricanes

- Passes west- forces oil slick to shore
- Passes east- forces oil slick away from shore
- Increased mixing and weathering





Questions??