




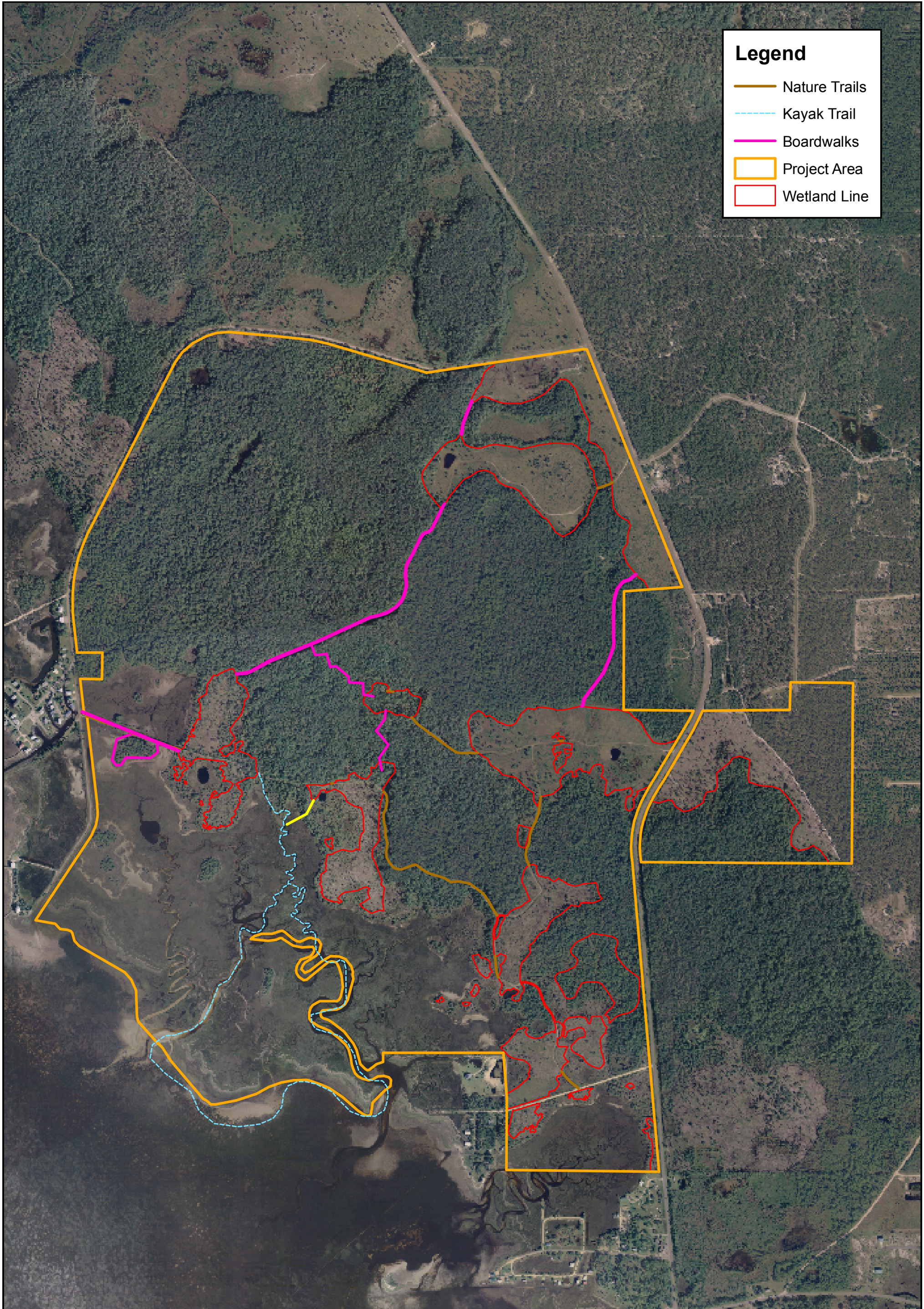


**Legend**

-  Nature Trails
-  Kayak Trail
-  Boardwalks
-  Project Area
-  Wetland Line




**BIRKITT  
ENVIRONMENTAL  
SERVICES, INC.**  
110 S. Edison Ave.  
Tampa, FL 33606

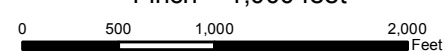
Figure 10  
**Passive Recreation**  
The Reserve at Sweetwater Estuary  
Taylor County, Florida

This map was developed using ArcGIS 9.3. It is provided for general reference, is subject to change, and is not warranted for any particular use or purpose. The information contained within is derived from several sources of varying quality and accuracy. Errors from non-coincidence of features from different sources may be present. Birkitt Environmental Services, Inc. and its employees are not liable for inappropriate or unintended uses of the information. This is not a map of survey.

Source: Aerial (DAS, All Other Data (Birkitt))  
Creation Date: 2/22/10  
Author: BES GIS Dept. (DL)  
File Path: T:\Keaton-Fruit\10\ Maps\PassiveRecreation\_2.22.10.mxd



1 inch = 1,000 feet



NAD 83, State Plane Florida North [Feet]